

By 206.79' E of Nml the SW -
 E 715.97 - 564043 E 154.7'
 S 70°14' E 496'

EXHIBIT "A"

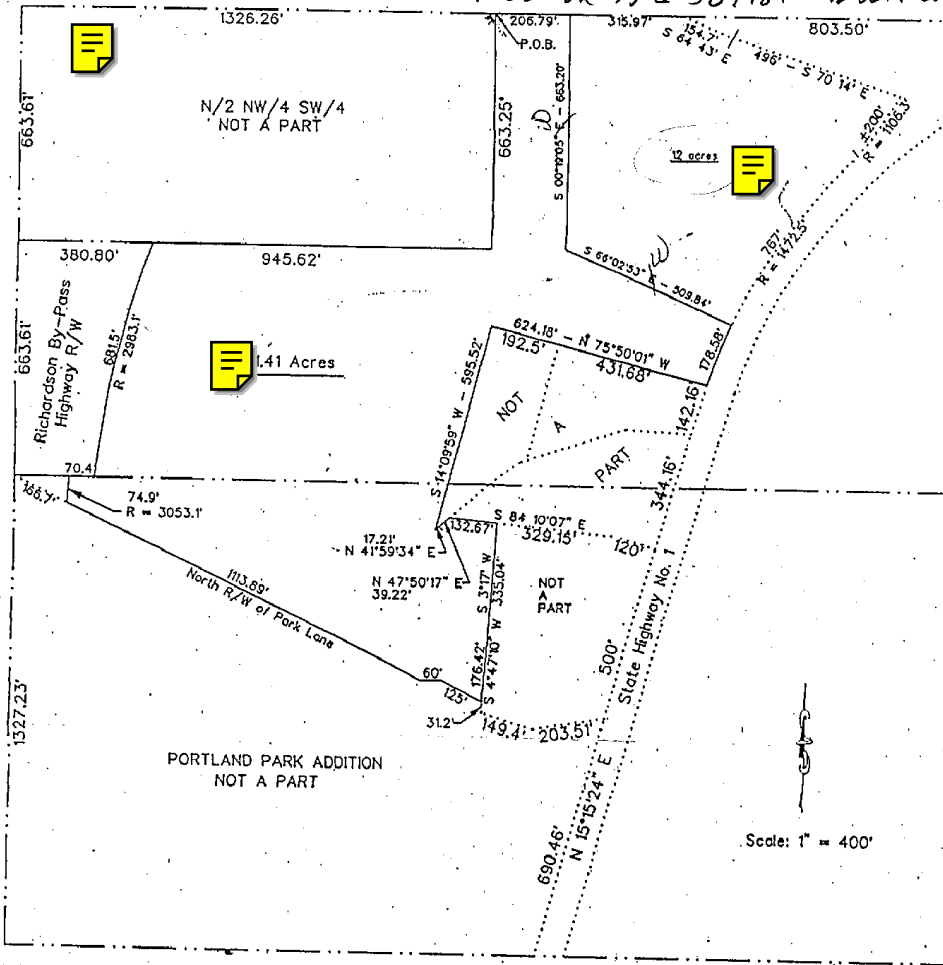
(31.41 acres, more or less)

Curve Rad 1472.5' D.R. 767'

N 66°02' 33" W 509.84 - N 0819' 05" W 663.20

For Dennis

Twp 006



I, Dennis L. Hammons, a Registered Land Surveyor, certify this plat is a true and correct representation of the following described property:

LEGAL DESCRIPTION

A part of the SW/4 of Section 32, Township 4 North, Range 6 East, Pontotoc County, Oklahoma, more particularly described as follows:

Beginning at the Northwest corner of the NE/4 SW/4 of said Section 32; thence East along the North line of said SW/4 a distance of 206.79 feet; thence S 00°19'05" E a distance of 663.20 feet; thence S 66°02'53" E a distance of 509.84 feet to a point on the West R/W line of State Highway No. 1; (formerly #12); thence Southwesterly along said R/W line on a curve to the right having a radius of 1472.50 feet a distance of 178.58 feet; thence N 75°50'01" W a distance of 624.18 feet; thence S 14°09'59" W a distance of 595.52 feet; thence N 41°59'34" E a distance of 17.21 feet; thence N 47°50'17" E a distance of 39.22 feet; thence S 84°10'07" E a distance of 132.67 feet; thence S 03°47'00" W a distance of 335.04 feet; thence S 04°47'10" W a distance of 176.42 feet to a point on the North R/W line of Park Lane; thence N 63°22'00" W along said R/W line a distance of 125 feet; thence West along the North R/W line of Park Lane a distance of 60 feet; thence N 63°22'00" W along the North R/W line of Park Lane a distance of 1113.89 feet to a point on the East R/W line of Richardson By-Pass; thence Northeastly along said R/W line along a curve to the right having a radius of 3053.1 feet a distance of 74.90 feet; thence to a point on the South line of the NW/4 SW/4 of said Section 32; thence East along said South line a distance of 70.4 feet; thence Northeastly on a curve to the right having a radius of 2983.1 feet a distance of 681.50 feet to a point on the South line of the N/2 NW/4 SW/4 of said Section 32; thence East along said South line a distance of 945.62 feet to the Southeast corner of said N/2 NW/4 SW/4; thence North a distance of 663.25 feet to the point of beginning. Containing 31.41 acres, more or less.

Dennis L. Hammons
 Dennis L. Hammons L.S. 1260

For: Chickasaw Nation	
Date: 08/18/98	plot # 2902
Dennis L. Hammons, Registered Land Surveyor P.O. Box 756, Ada, OK 74820 Ph. (405) 332-9588	

