

Appendix G

Integrated and Structured Replacement Tiered Facilities

An integrated and structured, replacement tiered facilities master plan has been developed to uniquely address the need for facilities to provide justice services for the safety, and security in Indian Country..

Appropriate justice services provided at the facilities fall into three tiers, that are not necessarily tiered by the severity of the crime or the need of security; rather, by the expected function that they are expected to serve within the structure of the sovereign Indian community, agreements, obligations and understandings of the past, and their relationship to the federal justice system.

Tier I facilities will serve as a 'Local Booking and Holding for Transport - 48-hour Detention and Substation Facility'. These facilities will serve remote populations and/or low criminal traffic locations. There are 167 such facilities.

Tier II facilities will serve as a, 'Combination Corrections, Law Enforcement and Court Facility.' These facilities will serve single or multiple tribes with medium populations and/or high criminal traffic. There are 79 such facilities.

Tier III facilities will serve as, 'Regional Corrections and Video Court Facility.' These facilities will serve large populations and single or multiple tribes. These facilities will also serve as a resources and distribution center for the region. There are 16 such facilities.

Several subsets within each tier are created to address unique needs within the general framework and functionality of the tier. Such subsets are noted as Tier I c, Tier II h, or Tier III c etc. The subsets are referred as 'Facility Type'. There are 28 subset facility types within the three tiers. The tiered system and the facility types are noted in more detail in the associated diagrams that follow.

Appendix G – Integrated and Structured Replacement Tiered Facilities

Tier III Facilities

Regional Corrections and Video Court Facility

Facilities serving large populations and/or multiple tribes – Served from Tier II or Tier I
Also Serving as Resources and Distribution Centers for the Region

Tier II Facilities

Corrections, Law Enforcement and Court Facility

Facilities serving medium populations and/or high traffic locations – Serving to Tier III

Tier I Facilities

Local Booking and Holding for Transport 48 Hour Detention and Substation Facility

Facilities serving remote populations and/or low traffic locations – Serving to Tier II

<ul style="list-style-type: none"> • One to two special treatment cells • Adult Male and Female Dormitory • Law Enforcement Substation Staff • Booking and Holding Detention Staff • Interactive Video Court and Satellite Link to Full Court 	<ul style="list-style-type: none"> • One to two special treatment cells • Juvenile Male and Female Dormitory • Law Enforcement Substation Staff • Booking and Holding Detention Staff • Interactive Video Court and Satellite Link to Full Court
Tier I a	Tier I b
<ul style="list-style-type: none"> • Combination of Tier I a and I b serving Adult and Juvenile, Males and Females • Law Enforcement Substation Staff • Booking and Holding Detention Staff • Interactive Video Court and Satellite Link to Full Court 	<ul style="list-style-type: none"> • Same as Tier I c with additional • Law Enforcement • Court Room and Judges Chambers
Tier I c	Tier I d
<ul style="list-style-type: none"> • Same as Tier I c expanded to serve 50 inmates, Law Enforcement and Criminal Investigators 	<ul style="list-style-type: none"> • Same as Tier I c reduced to serve 15 inmates, Law Enforcement and Criminal Investigators
Tier I e	Tier I f
<p>Tier I Local Booking and Holding for Transport 48 Hour Detention and Substation Facility Facilities serving remote populations and/or low traffic locations – Serving to Tier II</p>	

<div><ul style="list-style-type: none">Same as Tier I c reduced to serve 10 inmates, Law Enforcement and Criminal Investigators</div>	<div>Reserved</div>
Tier I g	Tier I h – Other

Tier I - Continued
Local Booking and Holding for Transport 48 Hour Detention and Substation Facility
Facilities serving remote populations and/or low traffic locations – Serving to Tier II

<ul style="list-style-type: none"> • Special Male/ Female Treatment cells • Juvenile Male and Female Dormitory • Corrections functions • Law Enforcement functions • Criminal Investigations functions • Dispatch functions • Full Court with Satellite Link to Video Court at Tier I facility • Approximately 100 to 120 bed capacity 	<ul style="list-style-type: none"> • Special Male/ Female Treatment cells • Juvenile Male and Female Dormitory • Corrections functions • Law Enforcement functions • Criminal Investigations functions • Dispatch functions • Full Court with Satellite Link to Video Court at Tier I facility • Approximately 100 to 120 bed capacity
<p>Tier II a serving single Tribe</p> <ul style="list-style-type: none"> • Integrated Type II a and Type II b • Housing both adult and juveniles with sight and sound separation • Corrections, Law Enforcement, Criminal Investigations, Dispatch and Full Court with Satellite Link to Video Court at Tier I facility • Approximately 150 bed capacity • 120 adults, 30 Juveniles 	<p>Tier II b serving single Tribe</p> <ul style="list-style-type: none"> • Same as Type II a except • Only Arraignment Court with Satellite Link to Video Court at Tier I facility • in lieu of • Satellite Link to Video Court at Tier I facility or Full Court
<p>Tier II c serving single Tribe</p> <ul style="list-style-type: none"> • Same as Type II b except • Only Arraignment Court with Satellite Link to Video Court at Tier I facility • in lieu of • Satellite Link to Video Court at Tier I facility or Full Court 	<p>Tier II d serving multiple Tribes</p> <ul style="list-style-type: none"> • Same as Type II c except • Only Arraignment Court with Satellite Link to Video Court at Tier I facility • in lieu of • Satellite Link to Video Court at Tier I facility or Full Court
<p>Tier II e serving multiple Tribes</p> <p>Corrections, Law Enforcement and Court Facility</p> <p>Facilities serving medium populations and/or high traffic locations – Serving to Tier III</p>	<p>Tier II f serving multiple Tribes</p> <p>Corrections, Law Enforcement and Court Facility</p> <p>Facilities serving medium populations and/or high traffic locations – Serving to Tier III</p>

<ul style="list-style-type: none"> • Integrated Type II a and Type II b • Housing both adult and juveniles with sight and sound separation • Corrections, Law Enforcement, Criminal Investigations, Dispatch and Full Court with Satellite Link to Video Court at Tier I facility • With no Dispatch or physical Court • Approximately 100 to 150 bed capacity 	<ul style="list-style-type: none"> • Integrated Type II a and Type II b • Housing both adult and juveniles with sight and sound separation • Corrections, Law Enforcement, Criminal Investigations, Dispatch and Full Court with Satellite Link to Video Court at Tier I facility • Approximately 75 beds capacity for 60 adults and 15 juveniles
<p>Tier II g, serving single Tribe</p> <ul style="list-style-type: none"> • Integrated Type II a and Type II b • Housing both adult and juveniles with sight and sound separation • Corrections, Law Enforcement, Criminal Investigations, Dispatch and Full Court with Satellite Link to Video Court at Tier I facility • Approximately 50 beds capacity for 40 adults and 10 juveniles 	<p>Tier II h, serving single Tribe</p> <ul style="list-style-type: none"> • Integrated Type II a and Type II b • Housing both adult and juveniles with sight and sound separation • Corrections, Law Enforcement, Criminal Investigations, Dispatch and Full Court with Satellite Link to Video Court at Tier I facility • Approximately 25 beds capacity for 20 adults and 5 juveniles
<p>Tier II i, serving single Tribe</p> <ul style="list-style-type: none"> • Integrated Type II a and Type II b • Housing both adult and juveniles with sight and sound separation • Corrections, Law Enforcement, Criminal Investigations, Dispatch and Full Court with Satellite Link to Video Court at Tier I facility • Approximately 225 beds capacity for 180 adults and 45 juveniles 	<p>Tier II j, serving single Tribes</p> <ul style="list-style-type: none"> • Same as Tier II c, but only with Law Enforcement and Court functions • No Corrections or Rehabilitation functions
<p>Tier II k, serving single Tribes</p>	<p>Tier II l, serving single Tribes</p>
<p>Tier II - Continued</p> <p>Corrections, Law Enforcement and Court Facility</p> <p>Facilities serving medium populations and/or high traffic locations – Serving to Tier III</p>	

Appendix G – Integrated and Structured Replacement Tiered Facilities – Tier III page 1 of 2	
<ul style="list-style-type: none"> • Special Male/ Female Treatment cells • Adult Male and Female Dormitory • Corrections functions • Satellite Link to Video Court at Tier II facility • Additional Services as Central Resource and Distribution Center for the region • Approximately 200 to 250 bed capacity 	<ul style="list-style-type: none"> • Special Male/ Female Treatment cells • Juvenile Male and Female Dormitory • Corrections functions • Satellite Link to Video Court at Tier II facility • Additional Services as Central Resource and Distribution Center for the region • Approximately 200 to 250 bed capacity
Tier III a serving single Tribe	Tier III b serving single Tribe
<ul style="list-style-type: none"> • Integrated Type III a and Type III b • Housing both adult and juveniles with sight and sound separation • Corrections functions • Satellite Link to Video Court at Tier II facility • Additional Services as Central Resource and Distribution Center for the region • Approximately 250 bed capacity 	<ul style="list-style-type: none"> • Same as Type III a • Except serving multiple tribes
Tier III c serving single Tribe	Tier III d serving multiple Tribes
<ul style="list-style-type: none"> • Same as Type III b • Except serving multiple tribes 	<ul style="list-style-type: none"> • Same as Type III c • Except serving multiple tribes
Tier III e serving multiple Tribes	Tier III f serving multiple Tribes
<p>Tier III</p> <p>Regional Corrections, and Video Court Facility</p> <p>Facilities serving large populations and/or multiple tribes – Served from Tier II or Tier I</p>	

<ul style="list-style-type: none">• Same as Type III c serving multiple tribes• Approximately 100 bed capacity	Reserved
---	----------

Tier III g serving single Tribe

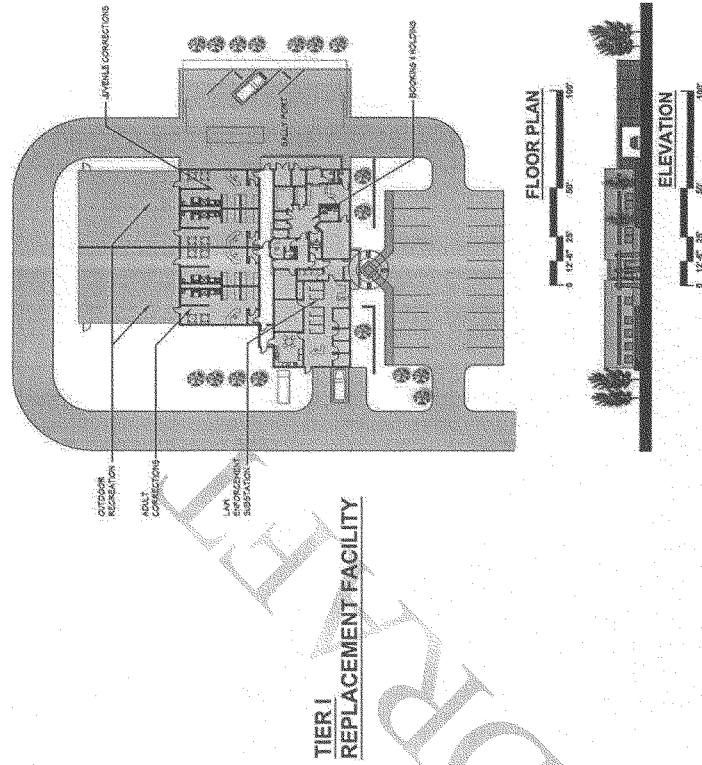
Tier III h serving multiple Tribes

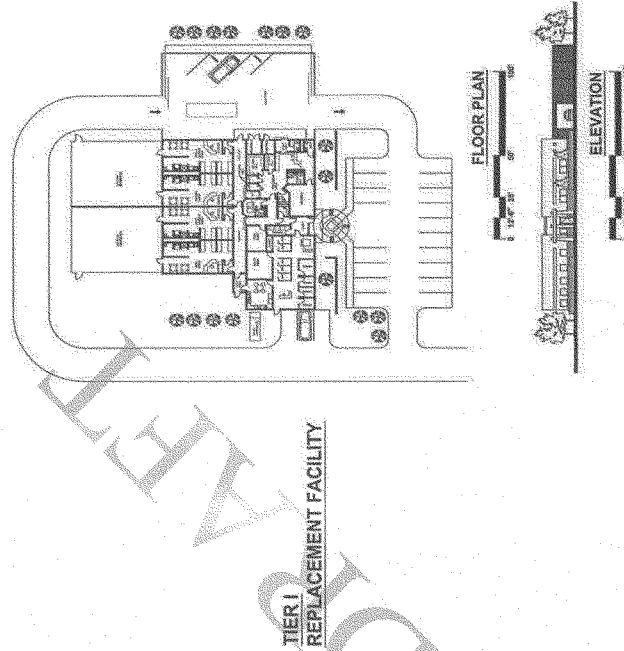
Tier III - Continued
Regional Corrections, and Video Court Facility
Facilities serving large populations and/or multiple tribes – Served from Tier II or Tier I

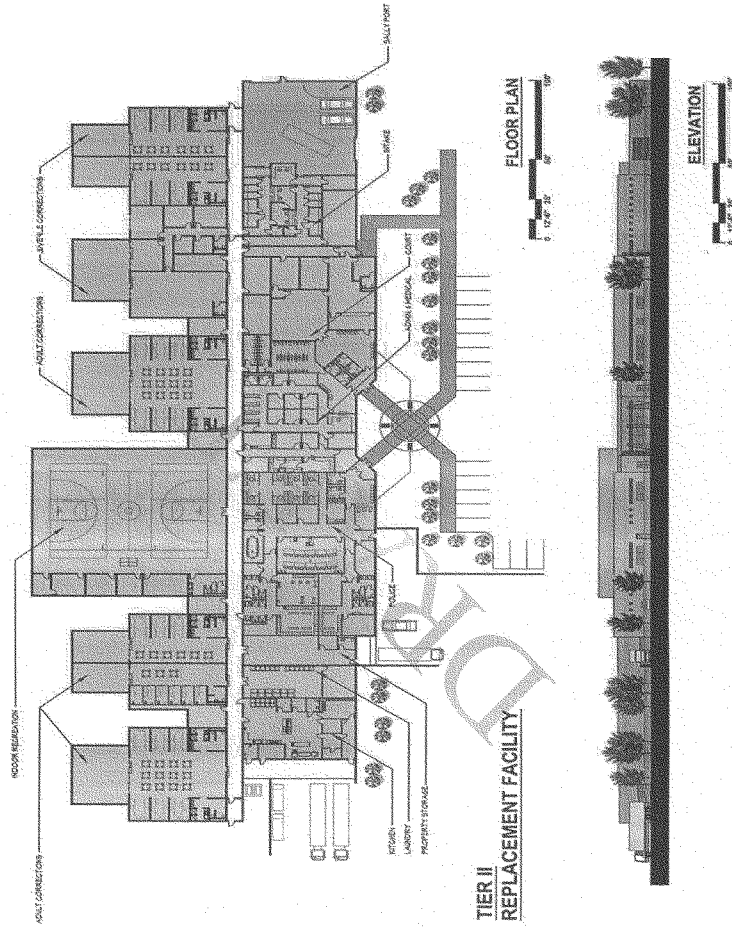
Appendix G 1**Schematics of Replacement Facilities**

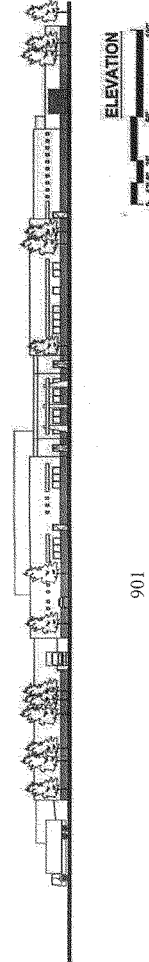
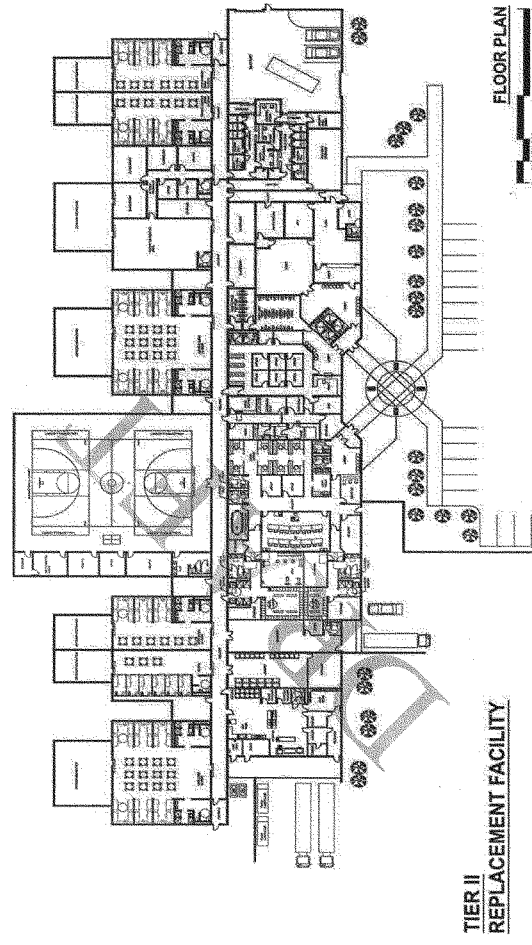
The structured development of tiered facilities is an integrated system of facilities to serve multiple functions at multiple locations throughout the country.

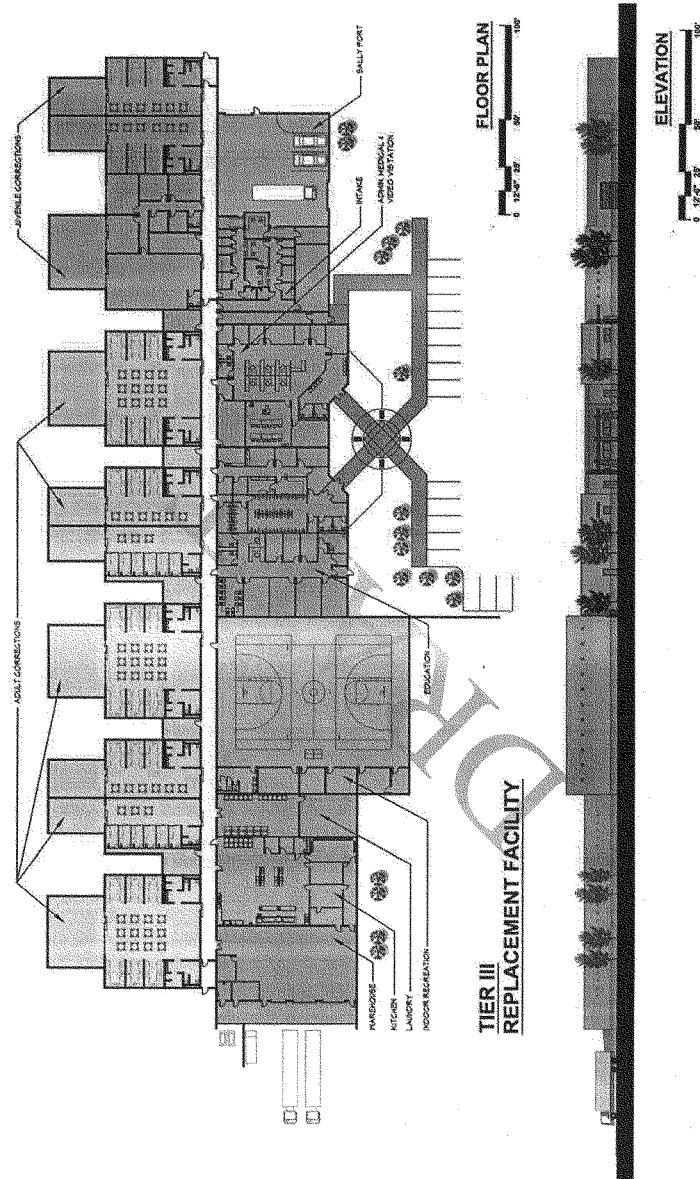
These schematics provide the reader with a view of the floor plan and elevations of each of the different tiers. The floor plans indicate the relationships of functionality and traffic pattern within the facility. The elevations depict the exterior of the facility and the relationships of the features at the site. A more detailed description is noted in the text of the report.



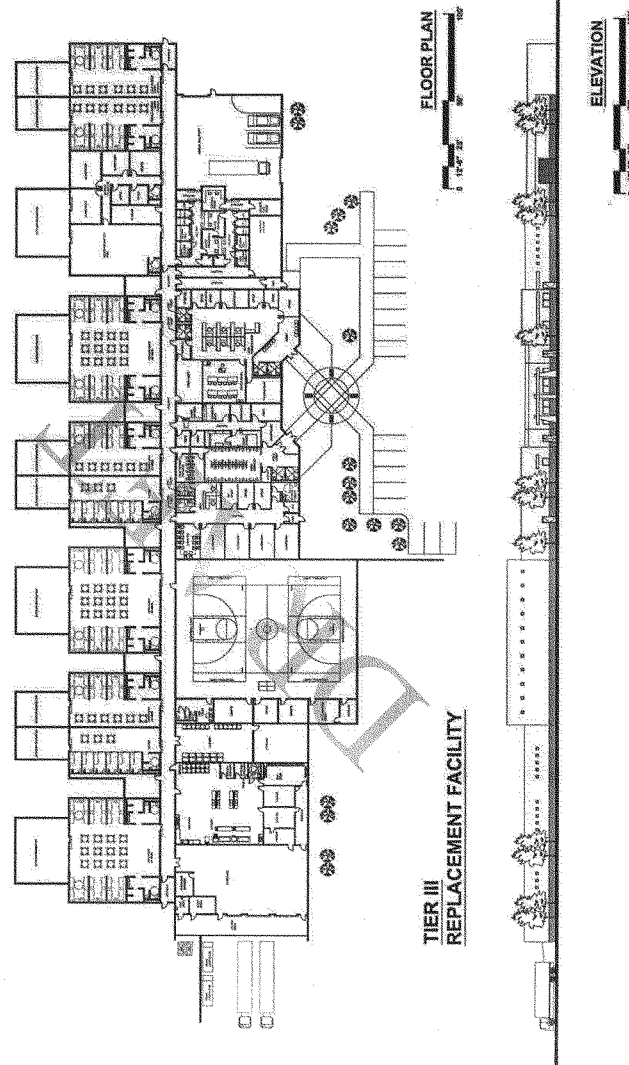








FINAL REPORT - MASTER PLAN FOR JUSTICE SERVICES IN INDIAN COUNTY PREPARED BY SHUBNUM



Appendix G 2**Facilities Construction Criteria**

Appendix G 2 is a follow-up of Appendix G 1 which provided the schematics of the Tier I, Tier II and Tier III facilities.

Construction criteria are developed to provide a framework for a working document that will establish uniformity and standards throughout the facilities program. Variations may be incorporated based on local weather and site conditions.

The criteria are based on the GSA standards and recommendations from the Leadership in Energy and Environmental Design (LEED®); developed by the United States Green Building Council(USGBC).

Facilities Construction Criteria

Construction criteria are developed to provide a framework for a working document that will establish uniformity and standards throughout the facilities program. Variations may be incorporated based on local weather and site conditions.

The criteria are based on the GSA standards and recommendations from the Leadership in Energy and Environmental Design (LEED®), developed by the United States Green Building Council(USGBC).

All BIA projects are to use and achieve a certified rating from the U.S. Green Building Council's Leadership in Environmental and Energy Design (LEED®) green building rating system.

Basic criteria used as a working-document-in-progress, for building construction are as follows:

Building Site

General

To the maximum extent, select the site for the building that minimizes its impact on the eco-system. Rehabilitate, should there be an impact on the eco-system

To the maximum extent, select the site for the building that minimizes its impact on the historical and cultural heritage

Protective Bollards

Concrete filled protective bollards to protect keypads at vehicle entry locations

Concrete filled bollards with flower pots to protect direct vehicle incursions at all facility entry locations

Building Shell

To the maximum extent provide energy efficiencies based on the materials and processes that utilize insulation, solar orientation, daylighting, and passive heating and cooling. Account for such efficiencies

Recycled Material

To the maximum extent, use recycled material for new procurement throughout the project. Account for the quantity of recyclable material that is procured for use on this project

Reuse to the maximum extent, waste and spoilage that may result from the process of construction of this project. Account for the quantity of such recycled material within the project construction

Appendix G 2 – Facilities Construction Criteria

Interior Construction

Materials	Reduce the quantity of materials that are odorous, irritating and/or harmful to the comfort and well-being of installers and occupants
Partitions	Glazed masonry wall grouted and reinforced
Inmate occupied space	Consistent partition construction Partitions to be constructed of 6" wide reinforced core filled glazed masonry units from the floor deck to the ceiling and reinforced core filled concrete masonry units above to the overhead structural deck; mortar is a Portland cement/lime/sand mix; partitions with glazed faces on both sides are constructed of double width 4" units Base to be an integral coved glazed masonry unit All partitions to be horizontally and vertically reinforced with #4 rebars at 24" on center, and vertically reinforced and tied to the structural floor and overhead slabs All piping and conduit must be fully concealed within the partition or chases
Inmate property space	6" core filled reinforced CMU #4 rebars at 24" on center Structural wall, slab to slab Glazed masonry unit integral coved base
Elevator with inmate occupancy	Match building shell and core construction 6" CMU with outside face to match room requirements (glazed masonry units where required)

Doors

Detention Areas with inmate occupation	Electronic locks, conduit to electronic controls locations 14 gauge, 2" hollow metal steel swinging detention door, factory primed and field painted
--	---

Appendix G 2 – Facilities Construction Criteria

Holding Cell at Main cellblock and Court Holding	5" x 20" vision panel with laminated security glass in all doors separating two occupied spaces
	View scope in lieu of vision panel for isolation and juvenile holding cells
	14 gauge metal frame, securely anchored via welded connection into the partition and fully grouted frame, that is factory primed and field painted
	Maximum security electro-mechanical deadlatch with door position and latch keeper sensor connected to the command and control center, electronic monitoring equipment, associated control wiring and control console
	Full mortised bearing detention grade hinges
	Integral sound gaskets at soundlocks, sallyports through cellblock perimeters, and isolation holding cells
	Doors to swing out from cells or occupied space
	Door to have metal grille door with 10 gauge, 1 3/4" stainless steel tubular construction with 1/4" diameter type 304 wire woven steel rod panel in 2" diamond pattern mesh
	Tubular 10 gauge metal door frame jamb and head
	Medium security mortise type bearing hinges
Attorney side of inmate-attorney Visitation room	Jamb mounted electro-mechanical operated dead latch, associated electronic control wiring to control console
	Door position and latch keeper switches monitored at the command and control room, electronic monitoring equipment, associated wiring to control console
	Food/Cuff port at center rail, and leg shackle port at the bottom rail of the door locks on each pass
	Solid core 1 3/4" hardwood veneer door: 3'-0" x 7'-0"
	Vision Panel 5" x 20" with laminated security glass in all doors separating the two occupied spaces
	Welded metal frames 16 gauge
	Hardware to be latch-sets with levers

Appendix G 2 – Facilities Construction Criteria

	Frame and threshold sound gasket
Vehicle door at Sallyport	Solid slat automatic overhead insulated coiling door
	Urethane-fill insulation
	Double wall slats, 20 gauge steel
	Post mounted scramble pad operation, post, power and conduit, keypad control equipment and wiring
	Conduit and power for photoelectric beam sensors and associated equipment and wiring
Egress Stair Door	Security type hollow metal door and frame, 14 gauge
	Keypad and remote control from command and control room, with fail-secure electric strike connected to the fire alarm system through electronic control wiring to the control console
	Door position and lock keeper switch monitored at the command and control console, associated electronic monitoring equipment and wiring to the control console
	Automatic door closers
Interior Glazing and Grilles	
Cell Grilles	Grilles to have 1 ¾" 10 gauge stainless steel tubular construction with ¼" diameter, type 304 wire woven steel rod panel in 2" diamond pattern mesh
Attorney/Inmate Visitation	Grilles to be comprised of tubular frame with wire mesh cloth, frame to be woven type 13 gauge stainless steel tubular construction, with #304 wire woven 1/2" mesh cloth
Vision Panel at Command and Control	Ballistic resistant UL 752 Level Four laminated safety glass and polycarbonate panel
	Metal Frame 14 gauge

Appendix G 2 – Facilities Construction Criteria

Specialties

Handrails - Secure Egress stairs	Match building shell and core construction
Toilet Accessories	Security type grab bars at showers and toilets
	Toilets to have one-piece modesty panel of 13 gauge stainless steel plate on tub frame securely mounted to floor and partition
	Integral recessed toilet paper holder
	Corrections type stainless steel mirror
	Collapsible corrections type coat hooks
	ADA AG compliant corrections grade grab bars

Interior Finishes

Paints, Coatings Wood and Carpeting	Maximize the use of low-emitting materials to prevent incursion of emitting air contaminants in indoor air
Walls-general	Glazed masonry units
Floors-general	Terrazzo
Floors - Court Holding Soundlock Vestibule	32 oz rolled carpet
	Yarn dyed color
	Fourth generation nylon yarn
	Bonded construction with cushion back
Floors Vehicle Sallyport	Scaled concrete structural slab
Ceiling-general	Acoustical-secure corrections ceiling in administration
	14 gauge perforated stainless steel with fiberglass acoustical insulation
Ceiling-inmate occupied	Painted exposed structural slab
Ceiling-Sallyports	Painted exposed structural slab

Appendix G 2 – Facilities Construction Criteria

Elevators

Secured Elevator	<p>Shaft to match building shell and core</p> <p>6' x 9' split cab with 3' door side chamber for officer</p> <p>Side opening</p> <p>Keycard controls</p> <p>Elevator door face to be 14 gauge stainless steel</p> <p>Cab floor to be 3/16" stainless steel checkered plate</p> <p>Internal divider screen and sliding divider door to be stainless steel wire mesh on 13 gauge stainless steel tubular framing members</p> <p>Cab panels to be 18 gauge stainless steel over plywood substrate</p> <p>Cab ceiling to be 12 gauge stainless steel plate with access hatch above 3'-0" front chamber</p> <p>Conduit, junction boxes and power for CCTV camera mounting in officer chamber and all associated equipment and wiring to central security control panel</p> <p>Conduit, junction boxes and power for Duress/Intercom at the cab and all associated equipment and wiring to the central elevator control panel</p> <p>Conduit, junction boxes, and power for one telephone in the cab and all associated equipment and wiring to the central communications panel</p> <p>All central control panels to be co-located in the command and control center</p>
------------------	---

Plumbing

Water and Wastewater Efficiency	<p>To the maximum extent, use water and waste-water efficiency. Account for the efficiency created by the plumbing fixtures, process controls, and the use of recycled water and wastewater</p>
---------------------------------	---

Appendix G 2 – Facilities Construction Criteria

Processing	<p>Shower to be ADA compliant, corrections 14 gauge stainless steel with recessed soap dish and fixed, corrections type showerhead</p> <p>Self priming floor drain with a corrections type cover plate</p> <p>Single bowl type 304 stainless steel sink at processing counter and gooseneck faucet with lever wrist control</p> <p>Hot and Cold water supplied by a point-of-use water heater</p>
Sallyports and Corridors	Self priming floor drain with security cover
Inmate cells	<p>Separate lavatory and toilet fixture of 14 gauge stainless steel</p> <p>Lavatory to have a corrections metered faucet with a drinking spout</p> <p>Toilet to have an integral seat, trap and blow-jet operation with concealed valves with anti-flood feature</p> <p>Self-priming floor drain with security cover</p>
Vehicle Sallyport	<p>Floor drain with tamper-proof cover and oil interceptor</p> <p>Recessed hose bibb with keyed cover plate</p>
HVAC System	
Energy Efficiency	To the maximum extent, provide energy efficiency for all equipment and processes. Account for the use of such products and processes
Building Energy Simulation	Demonstrate the percentage improvement in the building performance rating compared to the baseline building performance rating per ASHRAE/IESNA
Air Quality	To the maximum extent provide for monitoring the air quality of the outdoor air delivered and the indoor air exhausted. Manage refrigerants to minimize ozone depletion
Ventilation	Maximize outdoor air ventilation to improve indoor air quality

Appendix G 2 – Facilities Construction Criteria

Air Distribution System

Air Handling System	Air Handling Units (AHUs) are a part of the building shell and core provisions
	New spare filters for the first year of operation, beginning with a new filter after completion of the start-up process
	The main cell block is served by the Air Handling Unit on that level
	Cellblock area is a separate zone
Air Supply	Negative pressure relative to surrounding occupancies with cells negatively pressurized relative to secure corridors
	Maximum security supply air and return air grilles #9 bars at 5" on center horizontal and vertical grilles in ductwork when such ductwork passes through partitions
Exhaust Air	100% exhaust air for all holding areas, with exhaust system interlocked with supply system
	Cooling and heat reclaim exchanger prior to exhaust of tempered air
	Switched 100% exhaust from shower
Vehicle Sallyport	100% exhaust air, with carbon monoxide detection system, maximum security detention grille cover
	Cooling and heat reclaim exchanger prior to exhaust of tempered air
Thermostat Controls	Thermostat controls will be at the command and control center. Automated controls with manual overrides to affect maximum energy efficiency
HVAC Control Panel	All HVAC Central Control Panel to be co-located with other central control panels in the command and control center

Appendix G 2 – Facilities Construction Criteria

Fire Protection

Fire Suppression	<p>Sprinkler system is a part of the building shell and core provisions. Corrections type vandal resistant heads and covers on wet pipe system. No sprinkler heads inside holding cells</p> <p>Fire and smoke dampers to be provided in rated walls</p>
Fire and Smoke detection	One smoke and heat detection device in each occupiable space (provide such device in return air duct in holding cells)
Fire Alarms	<p>Audible and visible (strobe) alarm with tamper proof covers</p> <p>Manual pull stations in corridors, sallyports, processing, vehicle sallyport</p>
Fire Protection and Fire Alarm Control Panel	Central Control Panel for Fire Protection and Fire Alarm to be co-located with other central control panels in the command and control center

Electrical

Energy Efficiency	To the maximum extent, provide energy efficiency for all equipment, fixtures and processes. Account for the use of such products and processes
Site Generated Electric Power	To the maximum extent, provide electric power that is generated at the site. Use renewable energy sources. Use as appropriate: photovoltaics, wind generators, hydroelectric, peak-demand generator power, and co-generation with local waste products. Account for such energy-efficiencies
Service – General	<p>Emergency electrical power service to all areas within the facility</p> <p>Control Panel for the Emergency generator will be co-located with other central control panels at the command and control center</p> <p>Control Panel for the Emergency generator will also be located near the generator</p>

Appendix G 2 – Facilities Construction Criteria

Control Panels	Coordinate to assure that all central control panels are co-located at the command and control center. These central control panels include: Central Lighting Control Panel, Central HVAC Control Panel, Central Communications Panel, Central Elevator Control Panel, Central Fire Protection and Fire Alarm Control Panel and Central Doors, Cameras and Security Control Panel. Coordinate with all disciplines to assure ergonomic and accessible controls at the command and control center
Electrical Outlets	
Processing	GFCI quadraplex outlet 12" on-center on counter backsplash or above backsplash, with dedicated circuit for each quadraplex Minimum of 4 quadraplexes with corrections type, vandal resistant covers
Vehicle Sallyports	Two GFCI duplex electrical outlets
Lighting	
General	Minimize exterior lighting pollution by using appropriate light fixtures for all exteriors Lamps and light fixtures to provide maximum energy efficiency in the lighting output and lighting controls Lighting Controls for exterior and interior lighting to provide maximum energy efficiency Central Lighting Control Panel to be co-located with the Central HVAC Control Panel, Central Communications Panel, Central Elevator Control Panel, Central Fire Protection and Fire Alarm Control Panel and Central Doors, Cameras and Security Control Panel. All lighting on backup emergency power Recessed security lighting with 14 gauge steel housing, polycarbonate lens, keyed controls. Minimum of one light fixture for every 80 square feet in corridors, sallyports and storage. Minimum of one fixture in inmate occupied cells with touchpad controlled night-light within the same light fixture

Appendix G 2 – Facilities Construction Criteria

Vehicle sallyport	Recessed parabolic metal halide light fixtures for every 150 square feet Light control to include keyed switches located at entrance from cell block / secured elevator and remote control from command and control center
Telephone and Communications	Conduit and raceways for services and distribution from the service location to all parts of the facility and site
Processing	Conduit and junction boxes for two telephone outlets and four modem telephone outlets and associated wiring and equipment Conduit, junction boxes, equipment and cabling for four Local Area Network (LAN) points
Elevator-Secured	Conduit and junction boxes for Intercom / Duress button at elevator control panel, interconnecting conduit and wiring between the control panel and the elevator equipment room and all equipment and wiring to alarm the emergency response center Conduit, equipment and associated wiring for telephone in each elevator cab
Special Management Cells	Conduit, junction boxes equipment and associated wiring for video teleconferencing connections in isolation cells
Central Communications Control Panel	Central Communications Control Panel to be co-located with other central control panels in the command and control center
Security Systems	
General	Conduit, junction boxes and power and cable connections to each element of the security system
Central Security Systems Control Panel	Central Security Systems Control Panel to be co-located with other central control panels in the command and control center
Processing	Conduit, junction boxes, equipment and wiring for all CCTV cameras located at 8'-4" above finished floor or as specifically directed for mounting.

Appendix G 2 – Facilities Construction Criteria

	Conduit, junction boxes, equipment and wiring for door control systems. Associated conduit, equipment and wiring at the Command and Control Center
Inmate Cells	Conduit, junction boxes, power and cable connections to CCTV camera locations located outside the cells and looking into the cells
	Conduit, junction boxes, power and cable connections for the Intercom / Duress alarm in each cell
	Conduit, junction boxes, equipment and wiring for door control systems. Associated conduit, equipment and wiring at the Command and Control Center
Vehicle Sallyports	Conduit, junction box and post for scramble keypad and intercom at vehicle entrance
	Conduit, junction boxes, equipment and wiring for door control systems. Associated conduit, equipment and wiring at the Command and Control Center
	Conduit, junction boxes, mounting brackets, weather resistant enclosures, power and cabling for exterior cameras
	Conduit, junction boxes, wiring for imbedded loop detector systems. Associated conduit, equipment and wiring at the Command and Control Center
	Conduit, junction boxes, mounting brackets, enclosures, power and cabling for interior cameras
	Conduit, junction boxes, mounting brackets, enclosures, power and cabling for photoelectric beam sensors
	Conduit, junction boxes, mounting brackets, enclosures, power and cabling for passive infrared volumetric motion detector and sensors
	Conduit, junction boxes, mounting brackets, enclosures, power and cabling for Intercom / Duress alarm and scramble pad at the interior of the vehicle door

Appendix G 2 – Facilities Construction Criteria

Furnishings**Casework**

Processing	AWI Custom grade plastic laminate base cabinets
Holding Cells	13 gauge stainless steel bench securely anchored to the partitions and floor
Attorney / Inmate Visitation	1' 0" deep each side, interview shelf of 16 gauge stainless steel

Fixed Furniture

Processing	Furniture to be securely bolted to the floor and walls
	Desks to be securely bolted to the floor and walls
	Staff Stools
	Stainless steel stools for inmates
Attorney / Inmate Visitation	Stainless steel stools