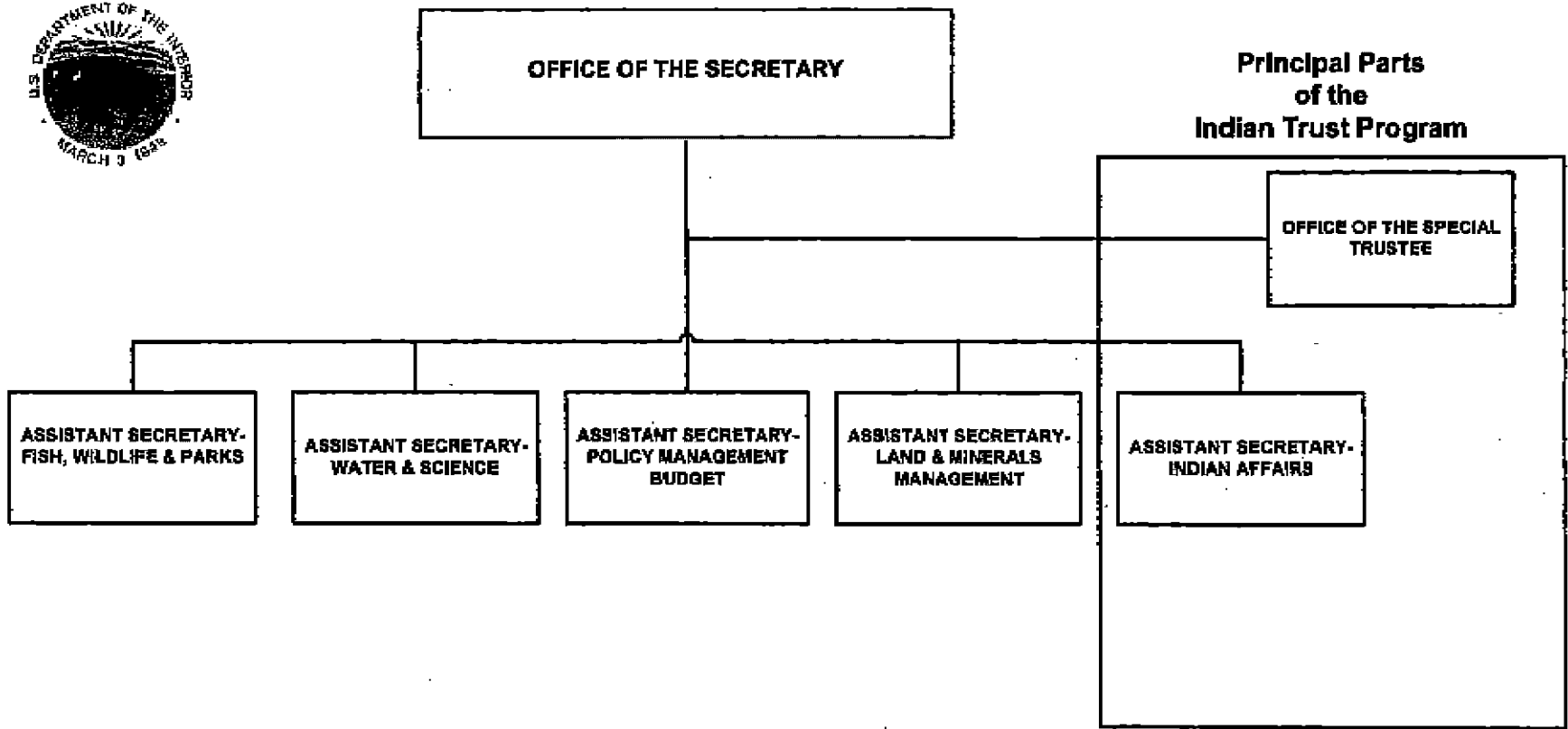




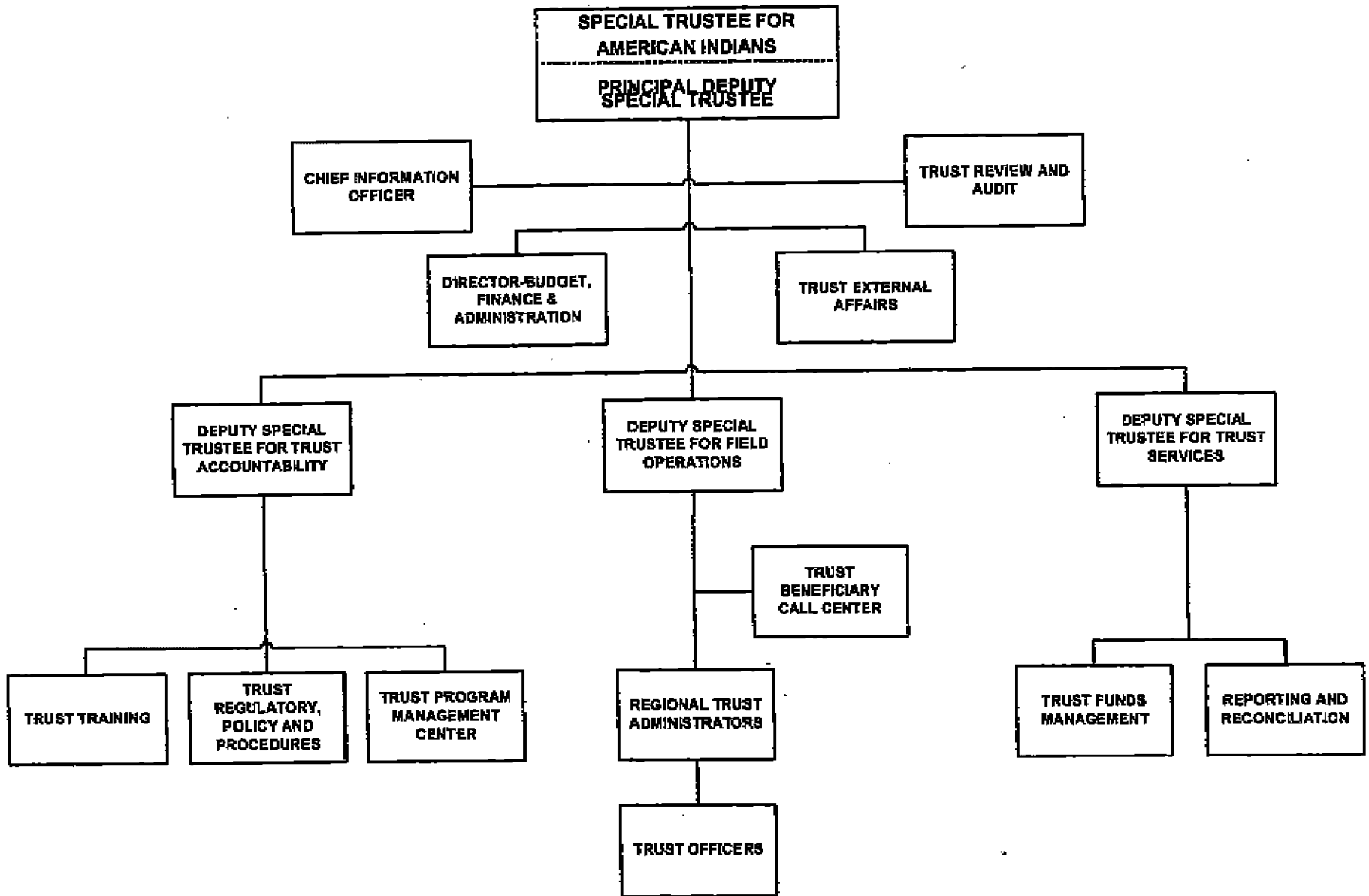
DEPARTMENT OF THE INTERIOR



Indian Trust Programs: Organizational Approach

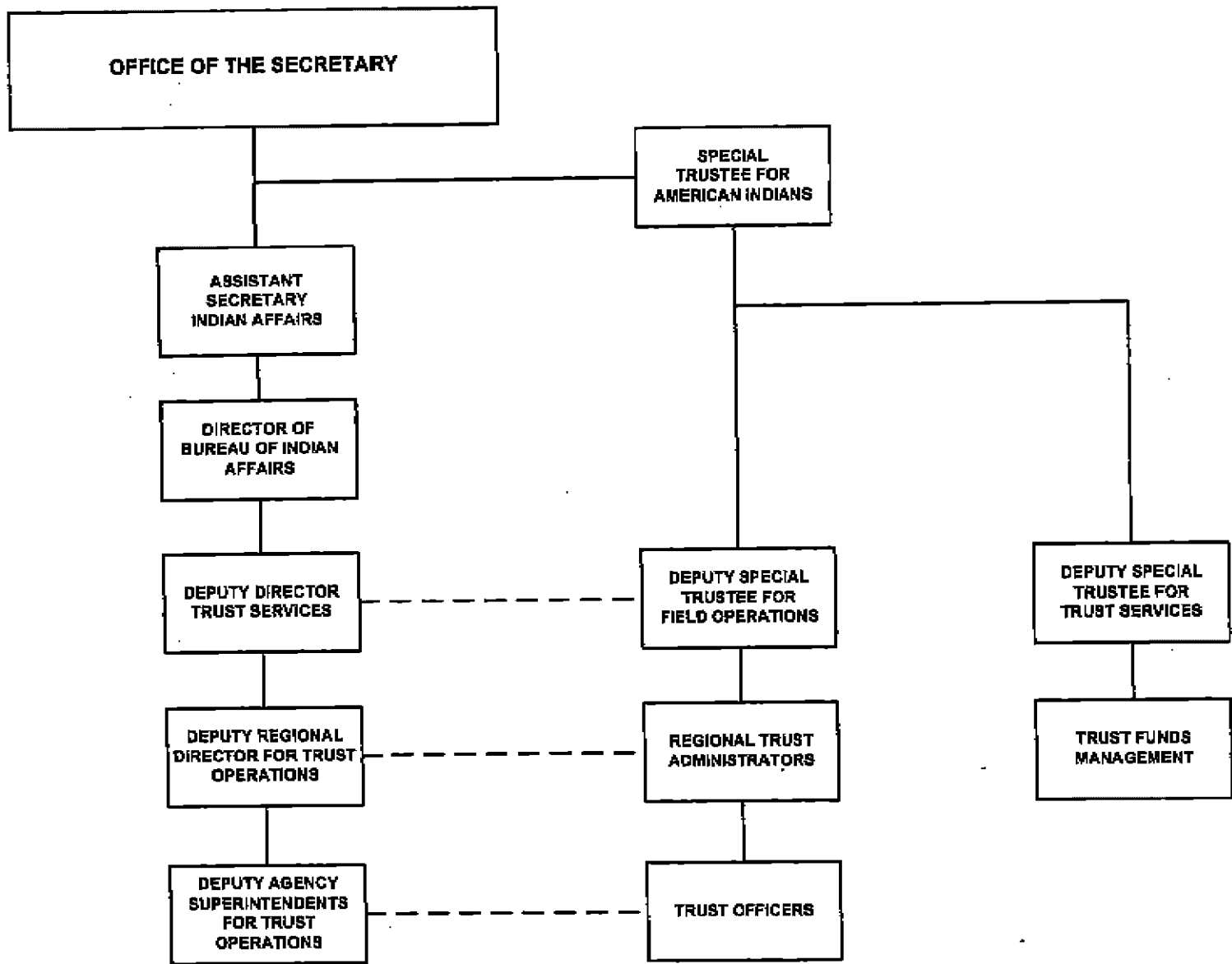


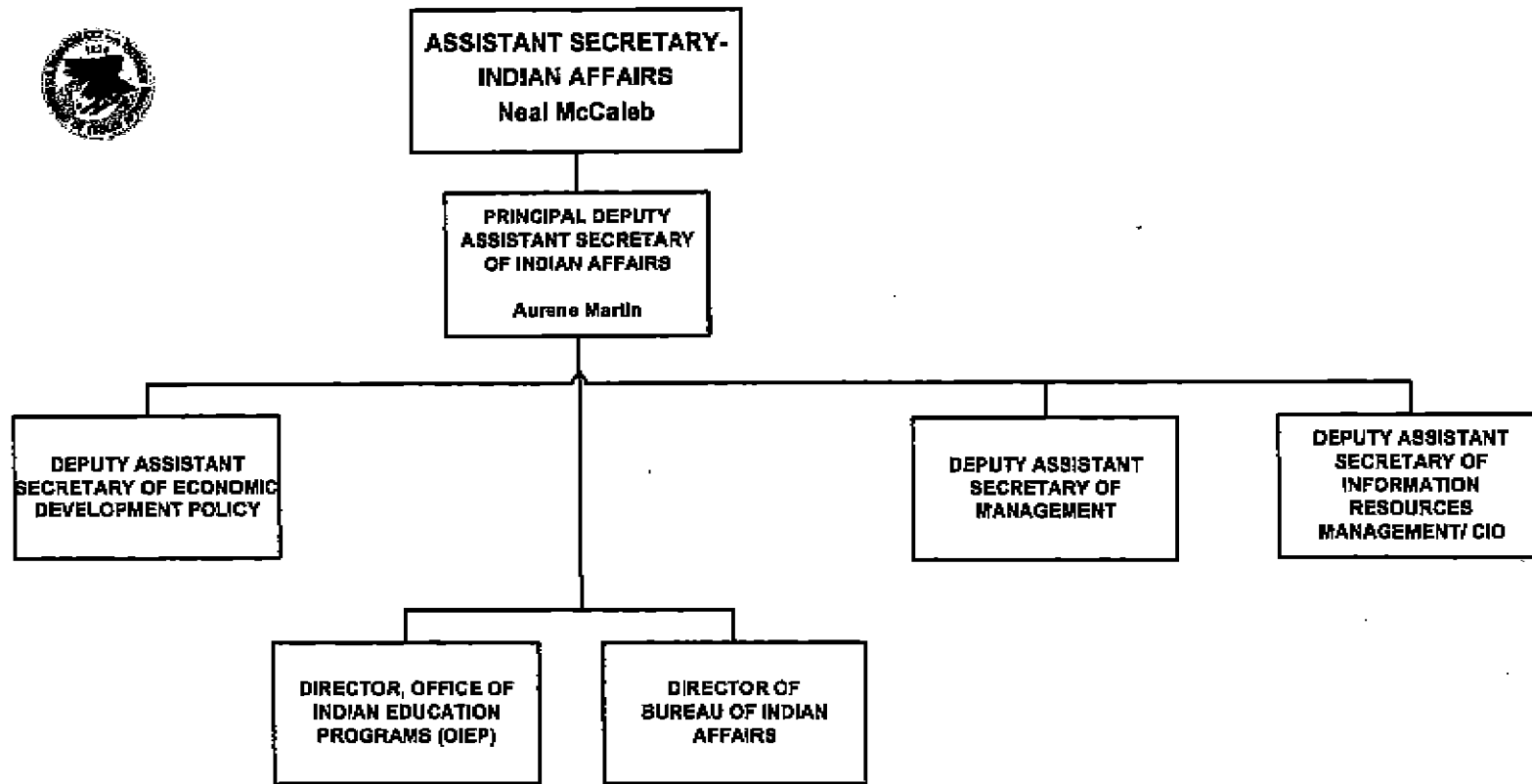
**Office of the Special Trustee for
American Indians**

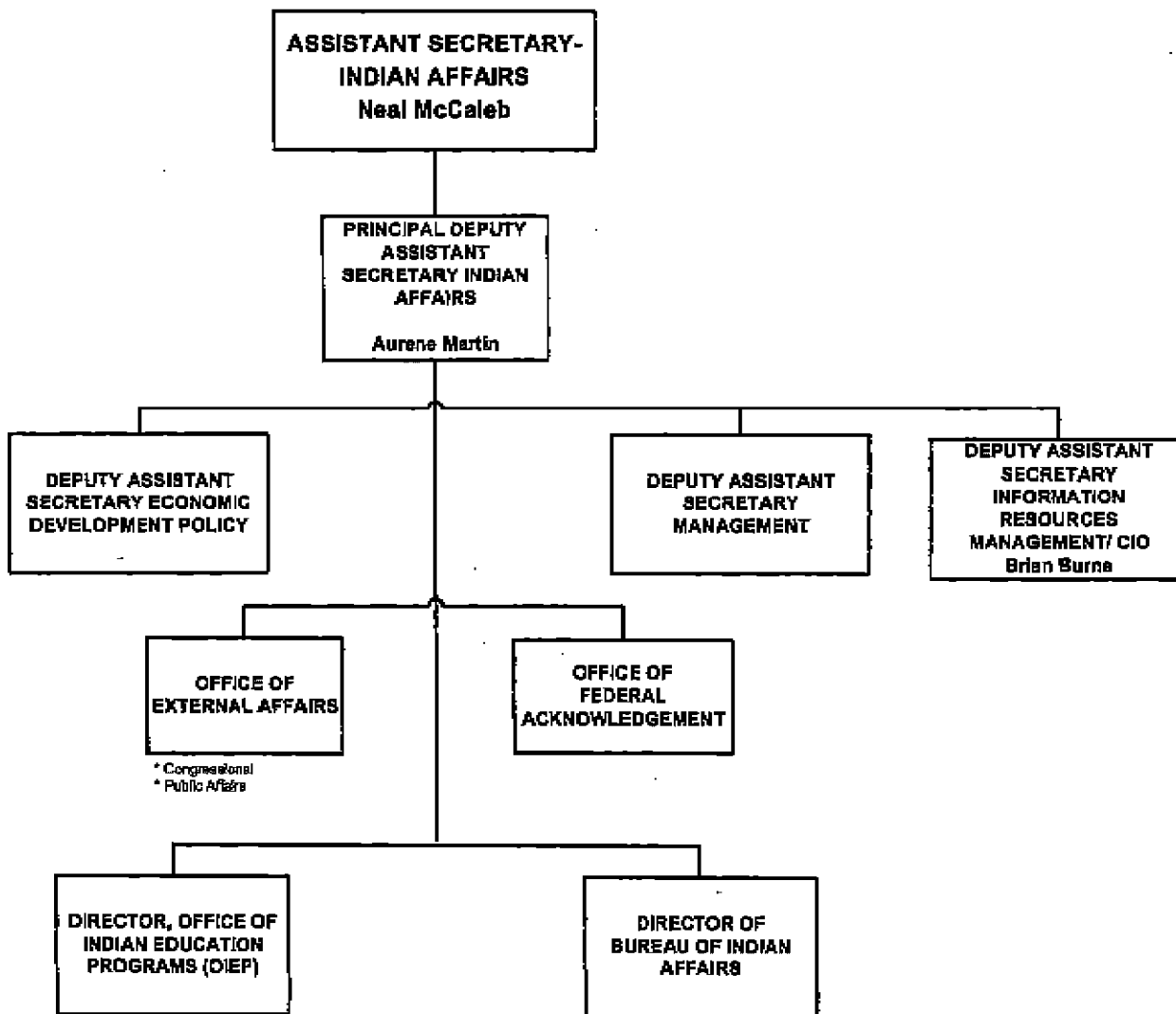


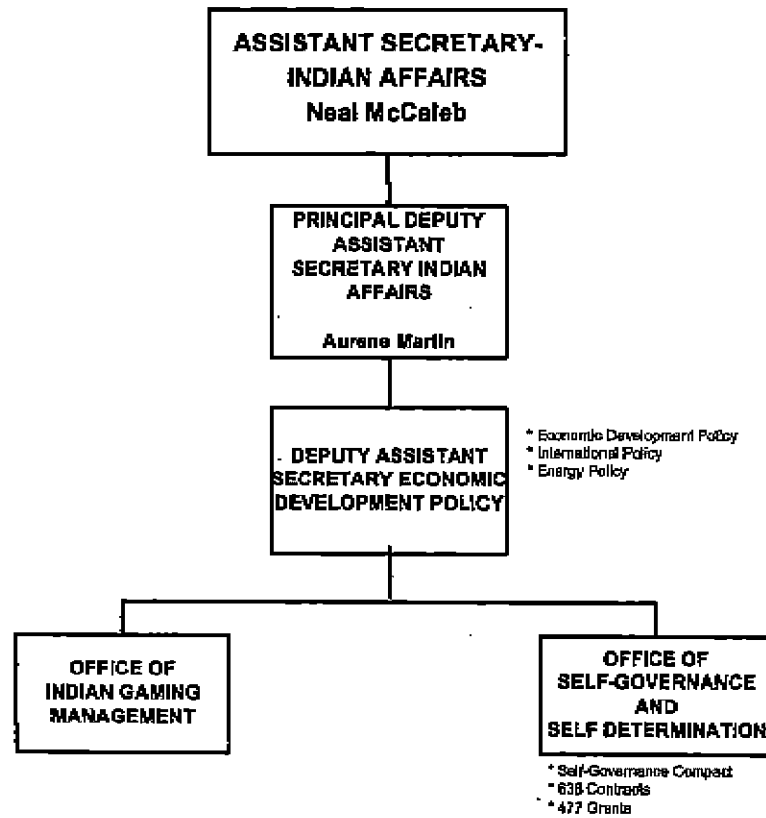
003

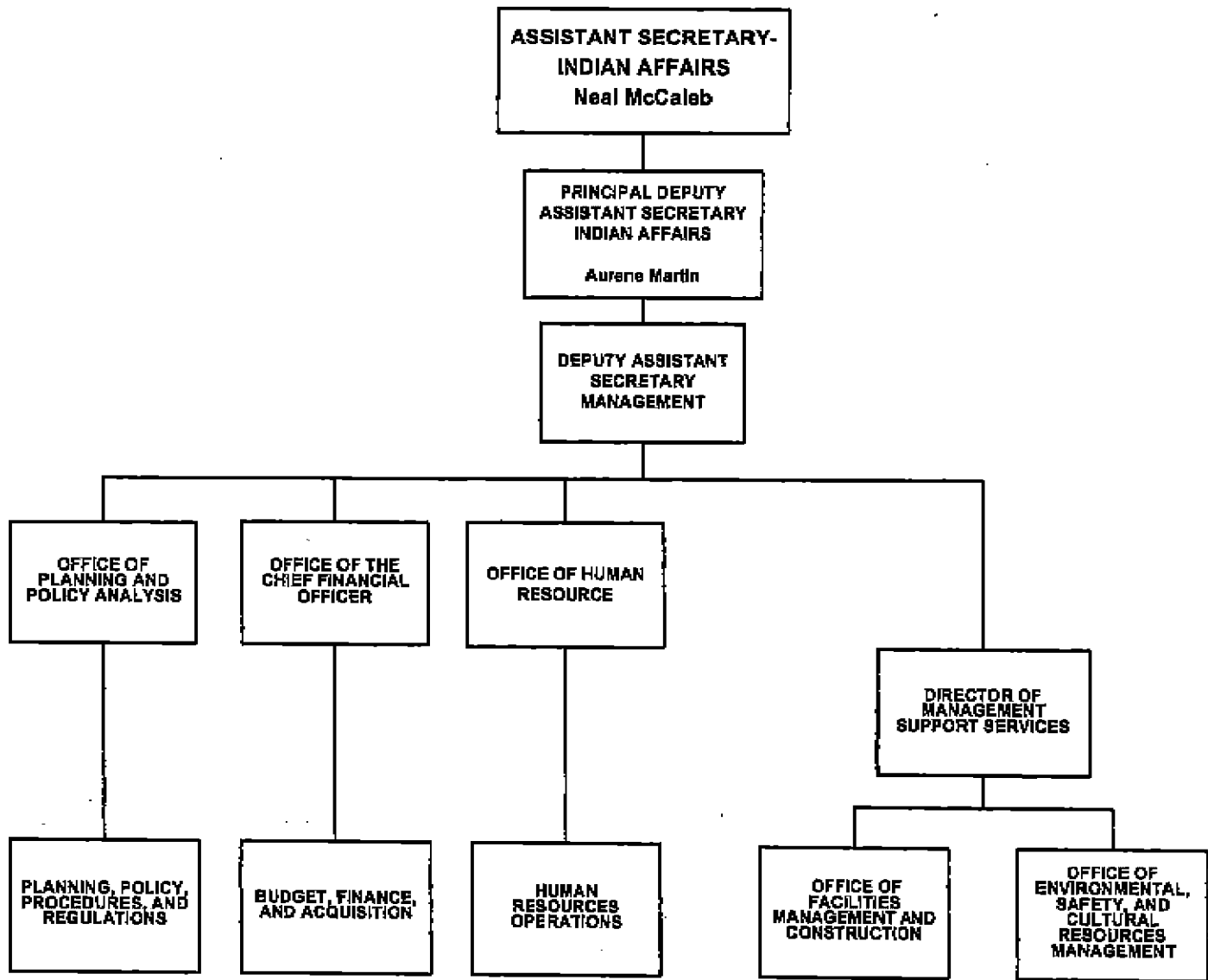
12/04/2002 20:20 FAX



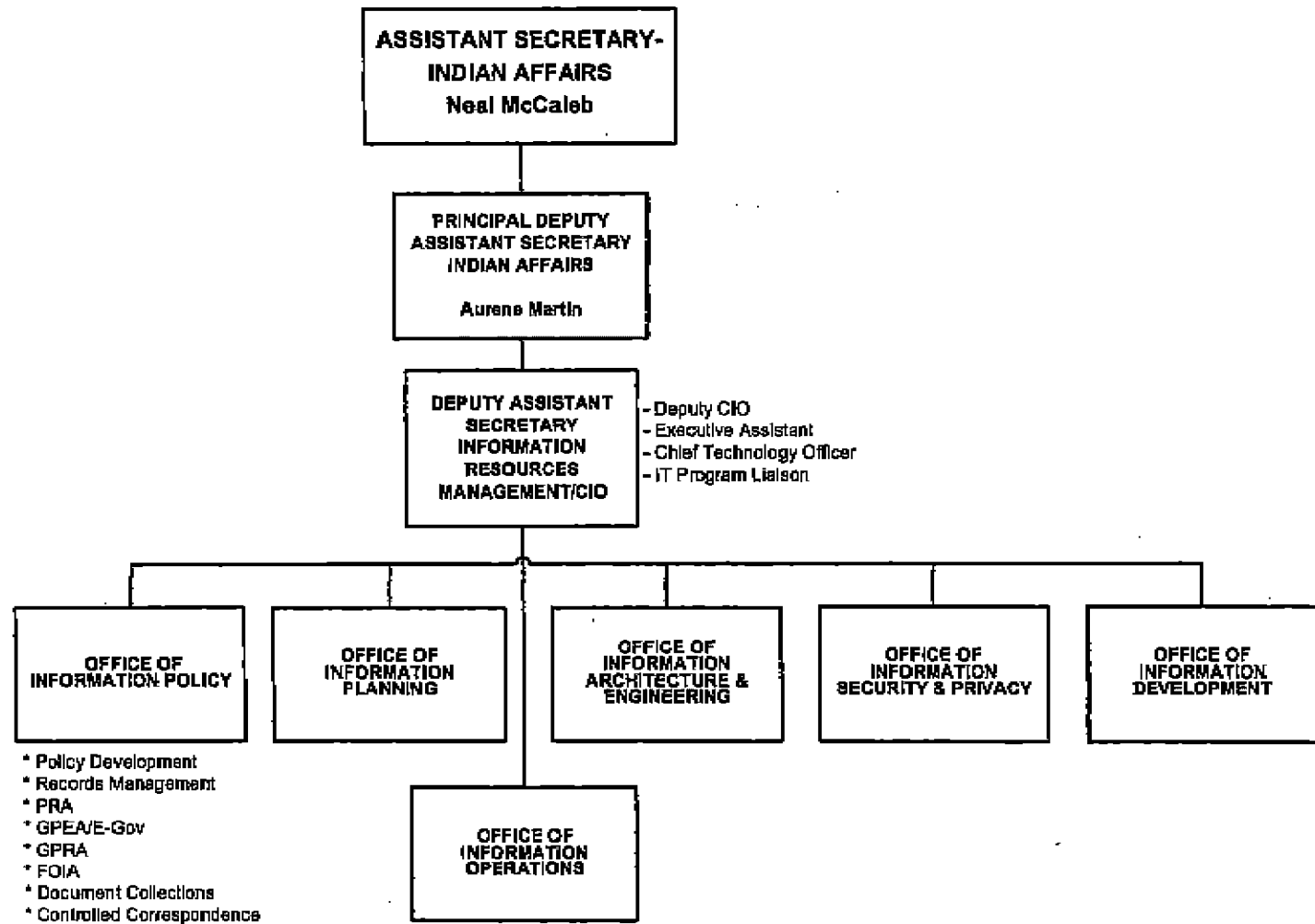




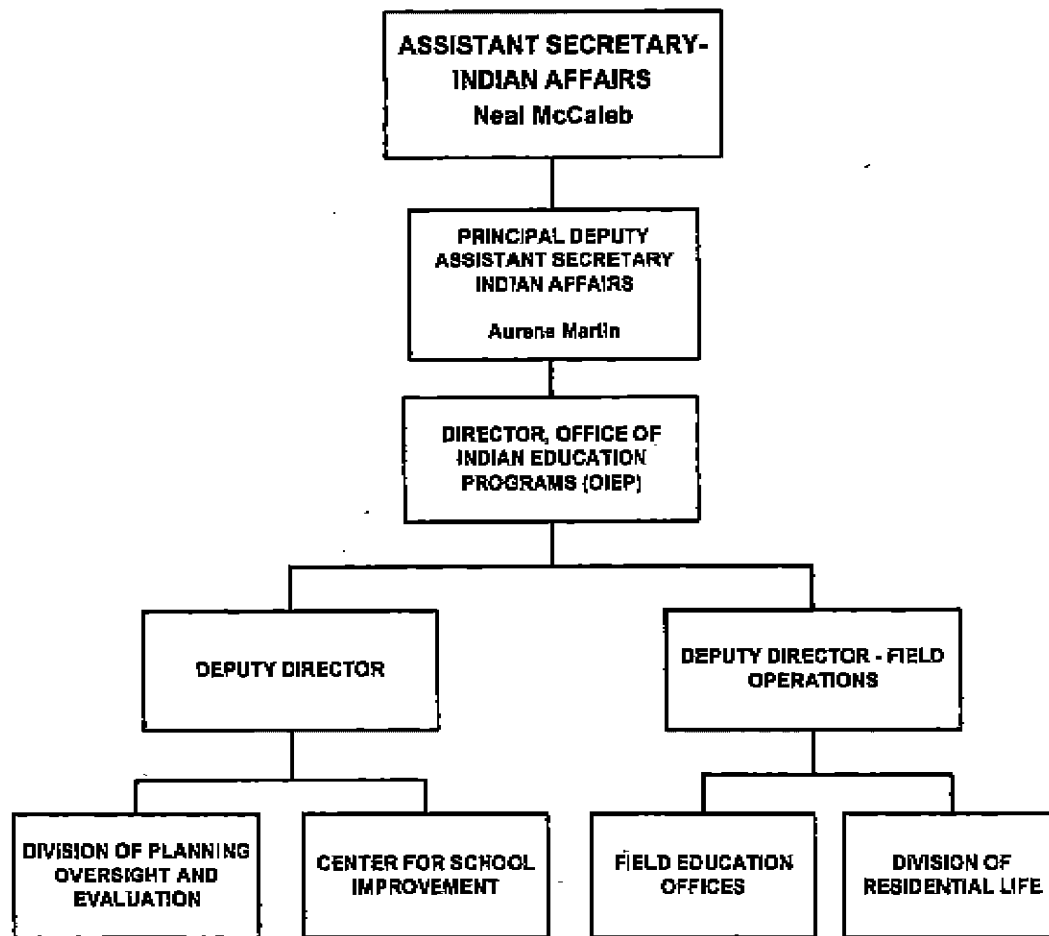


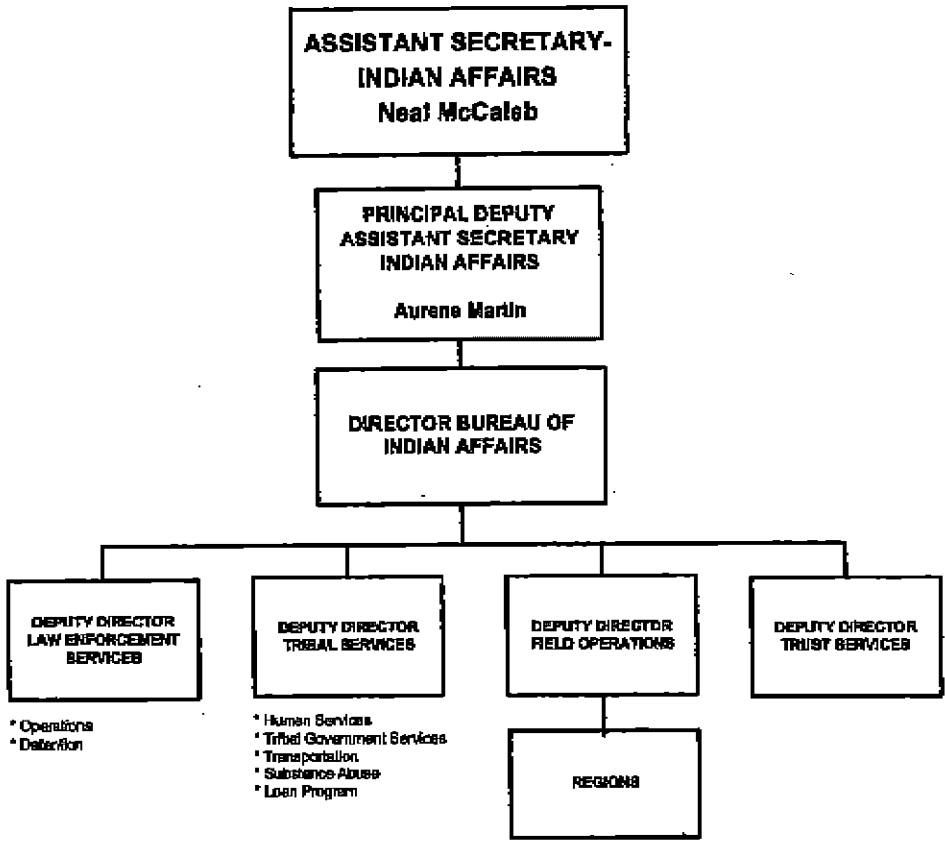


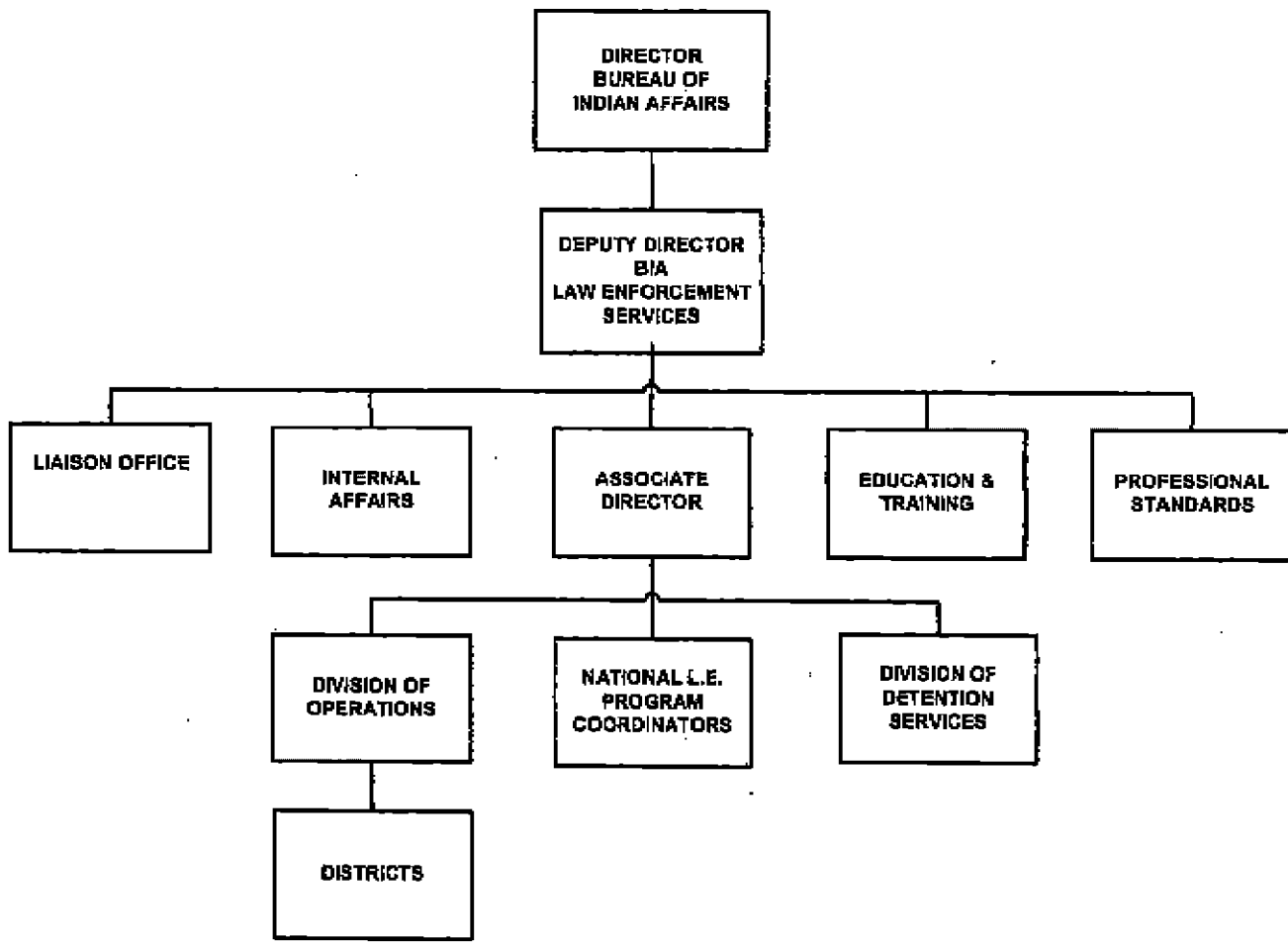
NOTE: Field personnel performing these duties report directly to these offices.

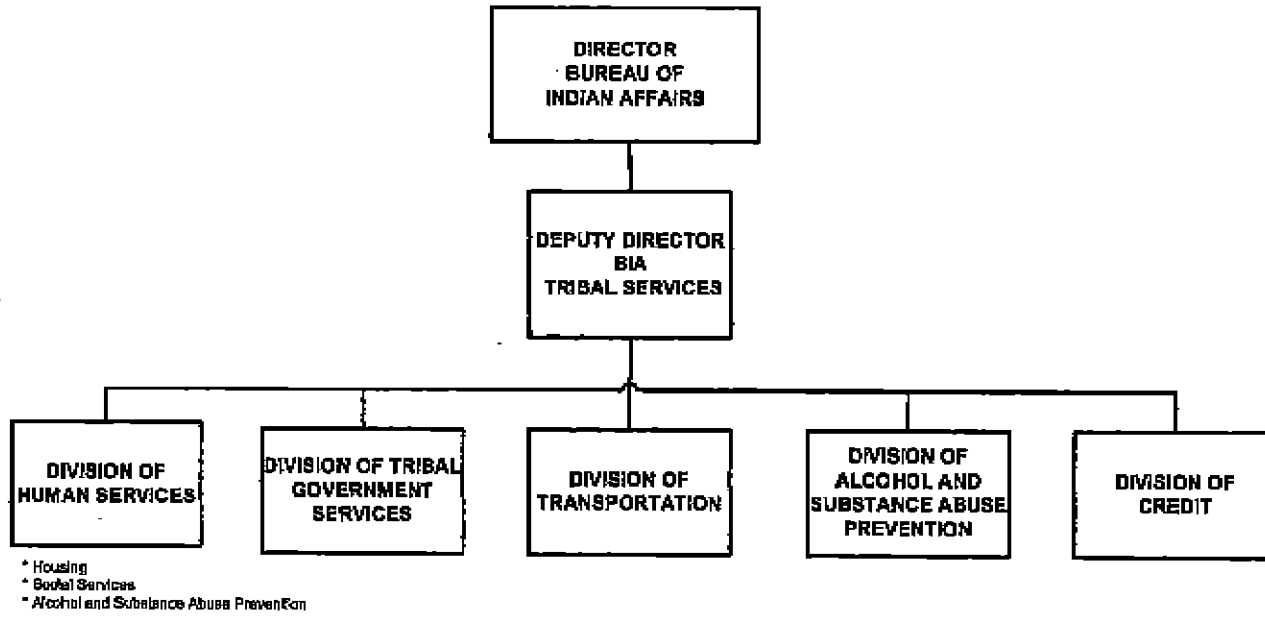


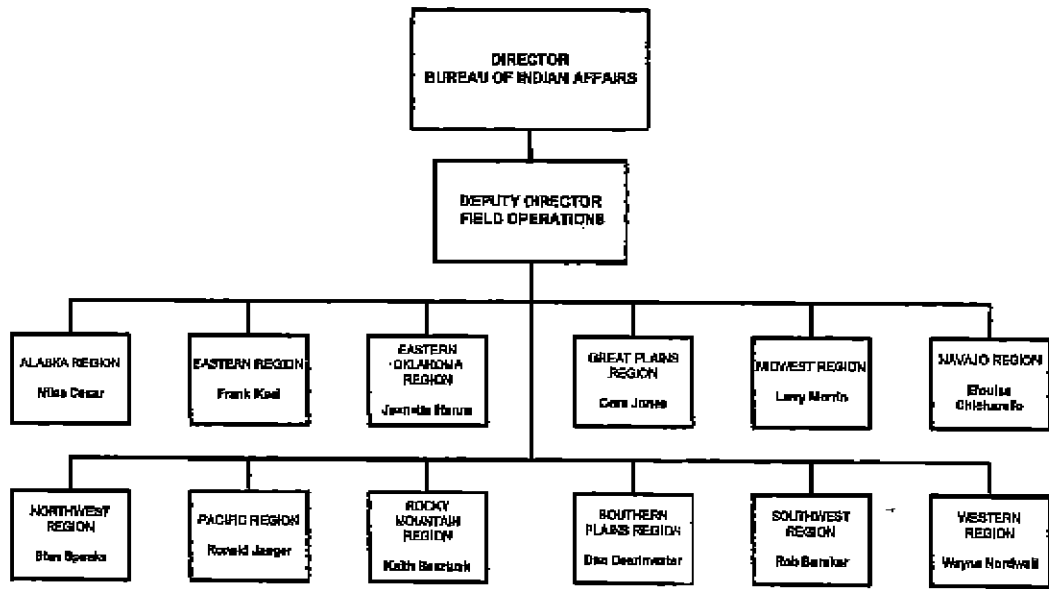
NOTE: Field personnel performing these duties report directly to these offices.



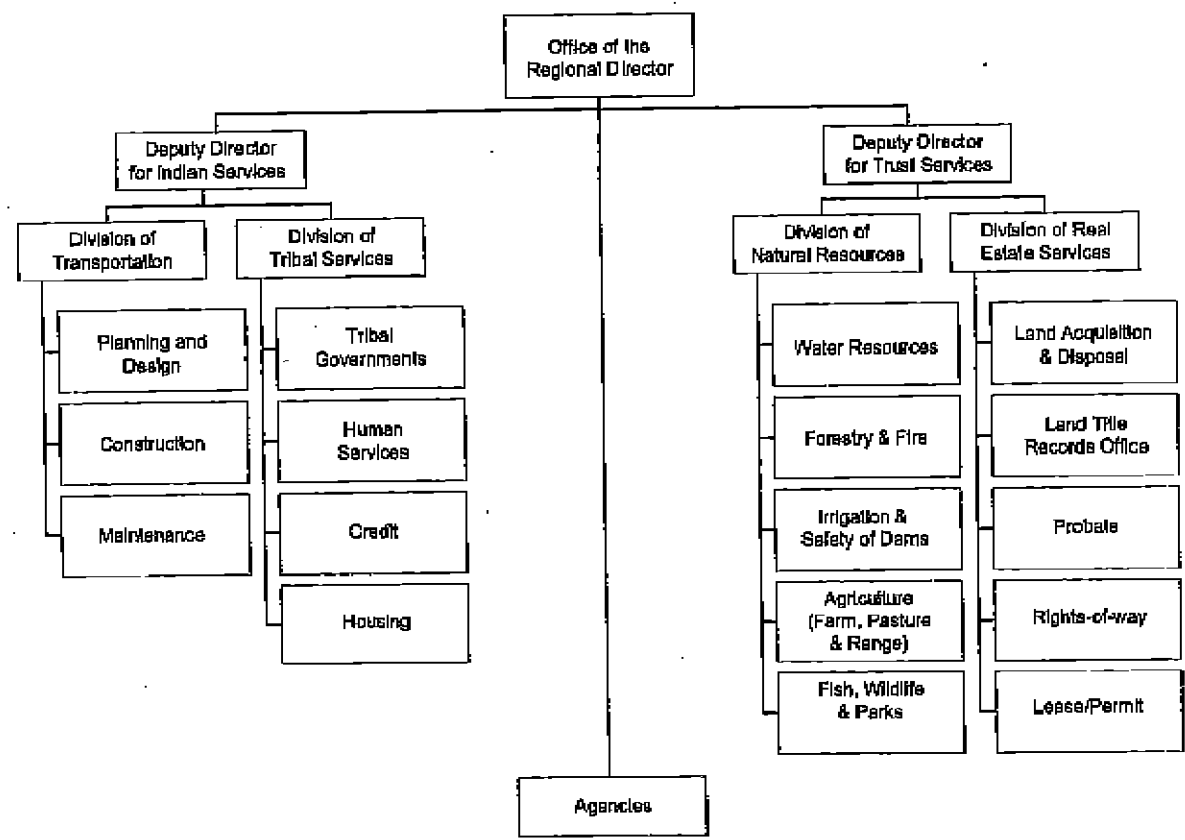








TYPICAL REGION



TYPICAL REGION/AGENCY

